

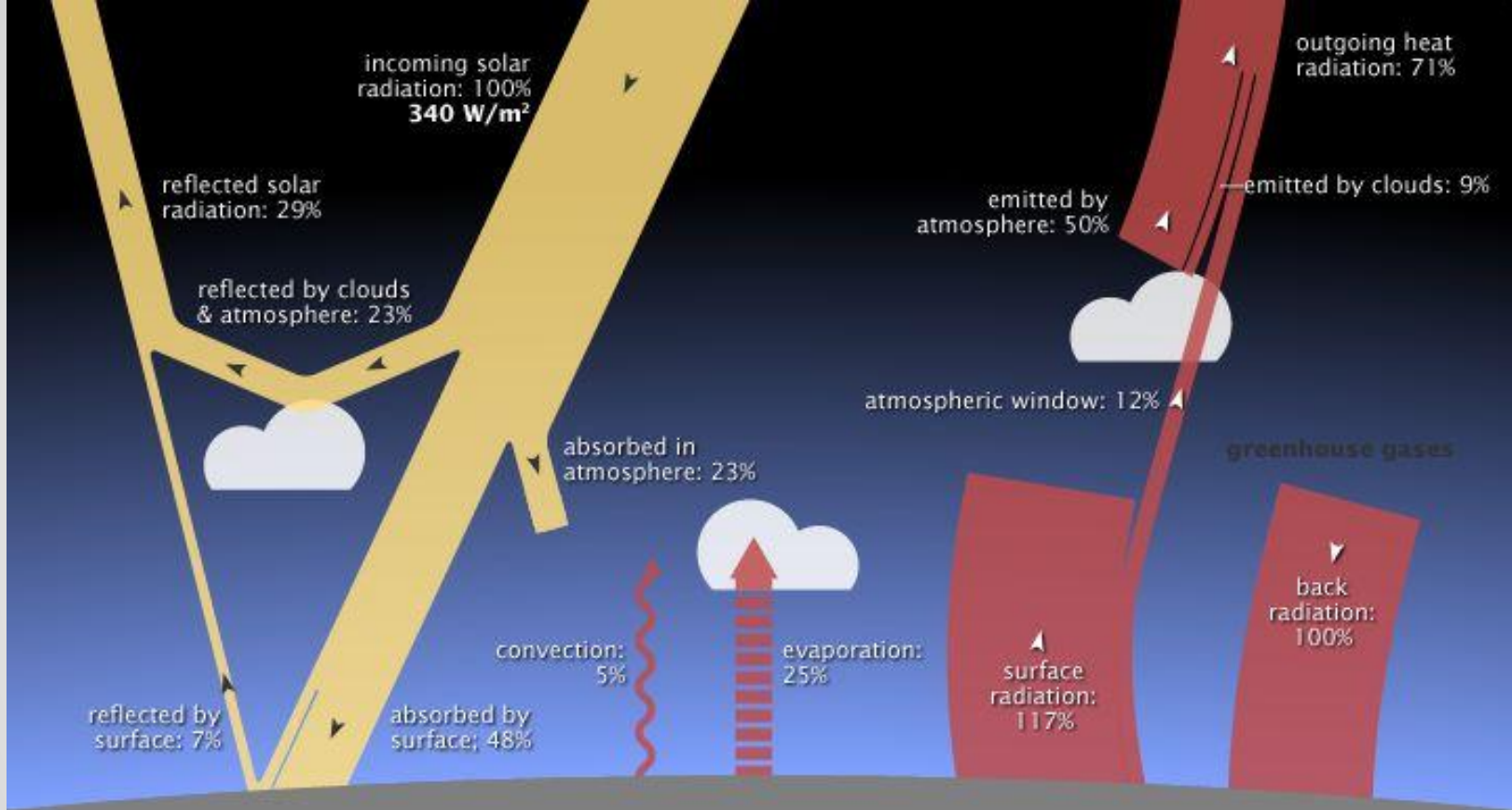
Climate Change Model

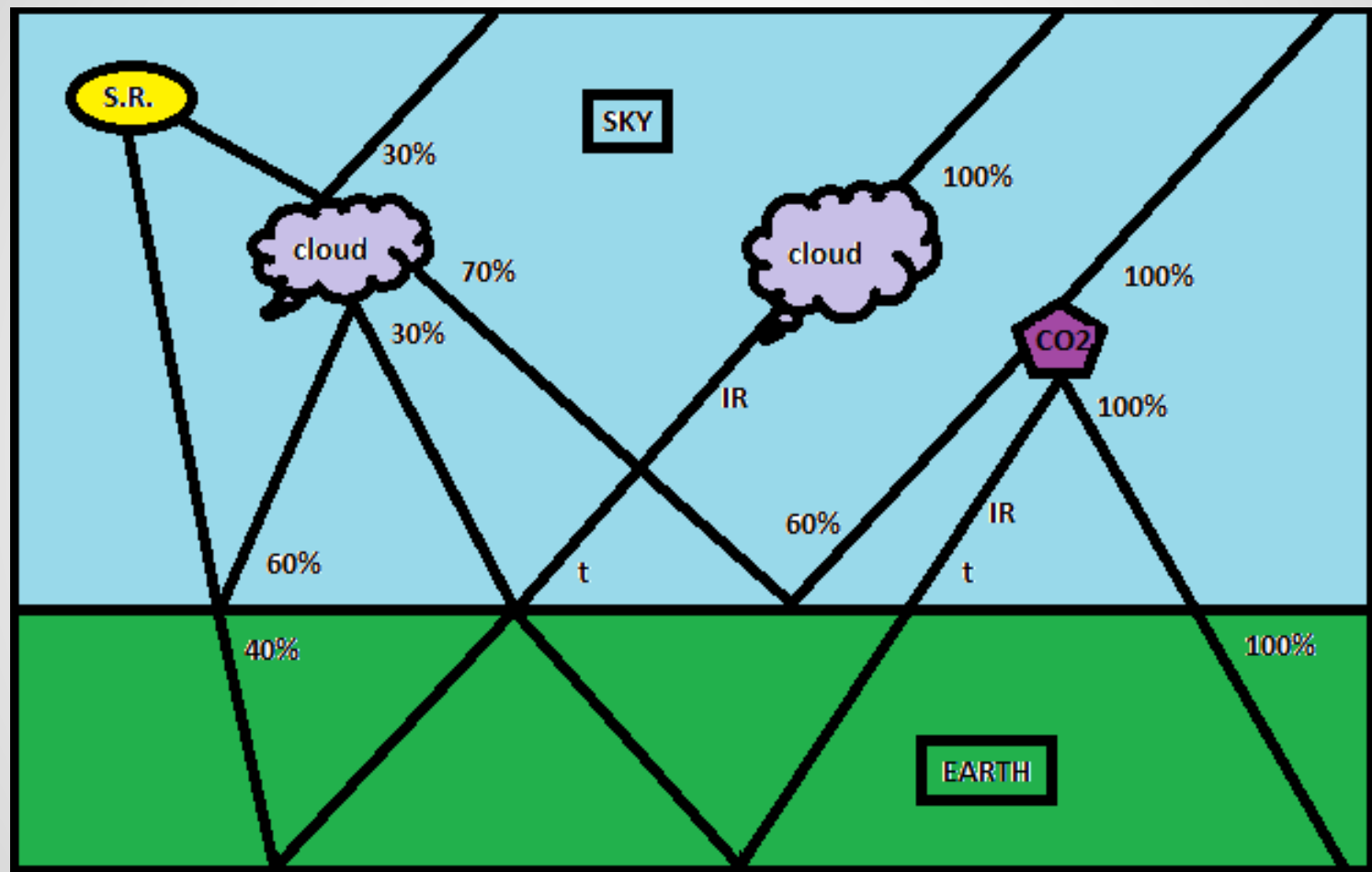
Introduction

- ❑ Climate Change
- ❑ Global Warming
- ❑ CO₂
- ❑ Greenhouse effect

Introduction

- Sunrays
- Clouds
- Earth
- Albedo
- Infrared waves
- CO₂



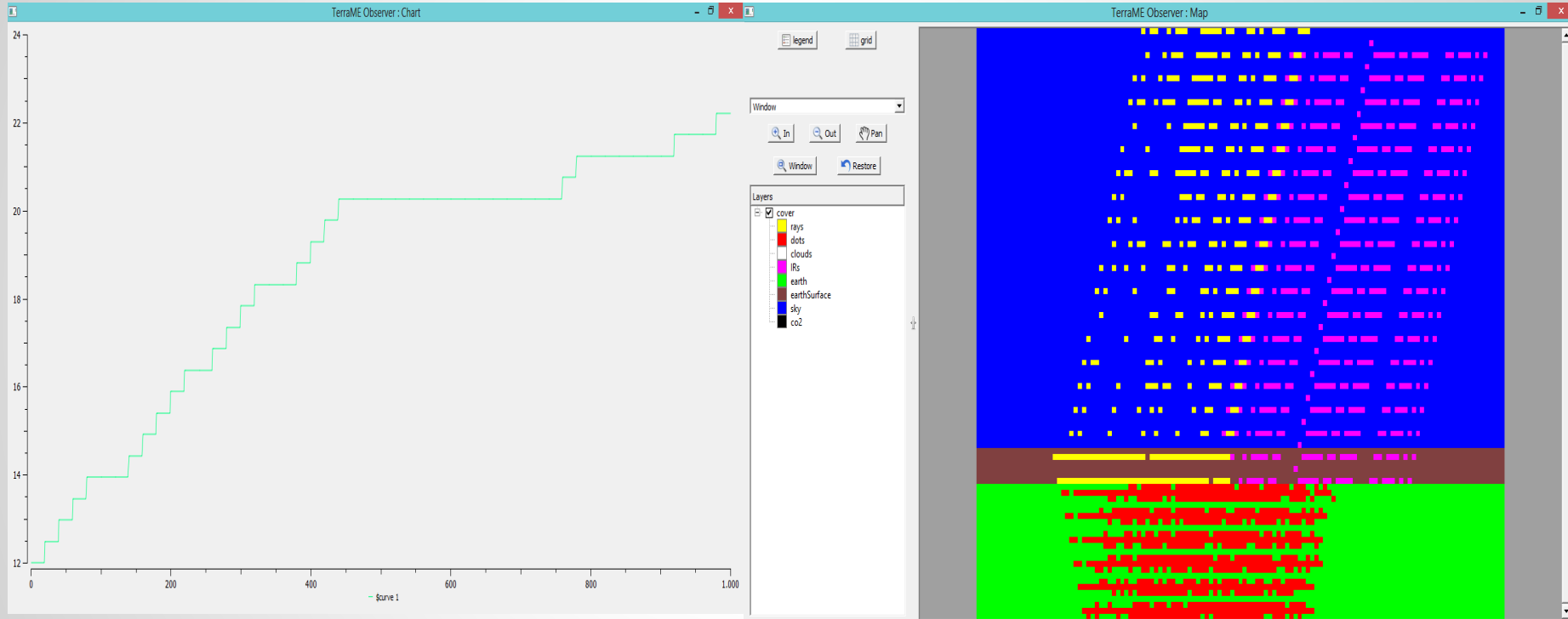


Model

- Cellular Automata based model
- Uses the TerraMe concepts of Neighborhood, environment, society and Timer, etc.
- Helps in understanding the effects of different parameters in global warming like carbon dioxide concentrations, cloud cover, etc
- Assuming that the entire earth has same albedo and earth can be heated uniformly

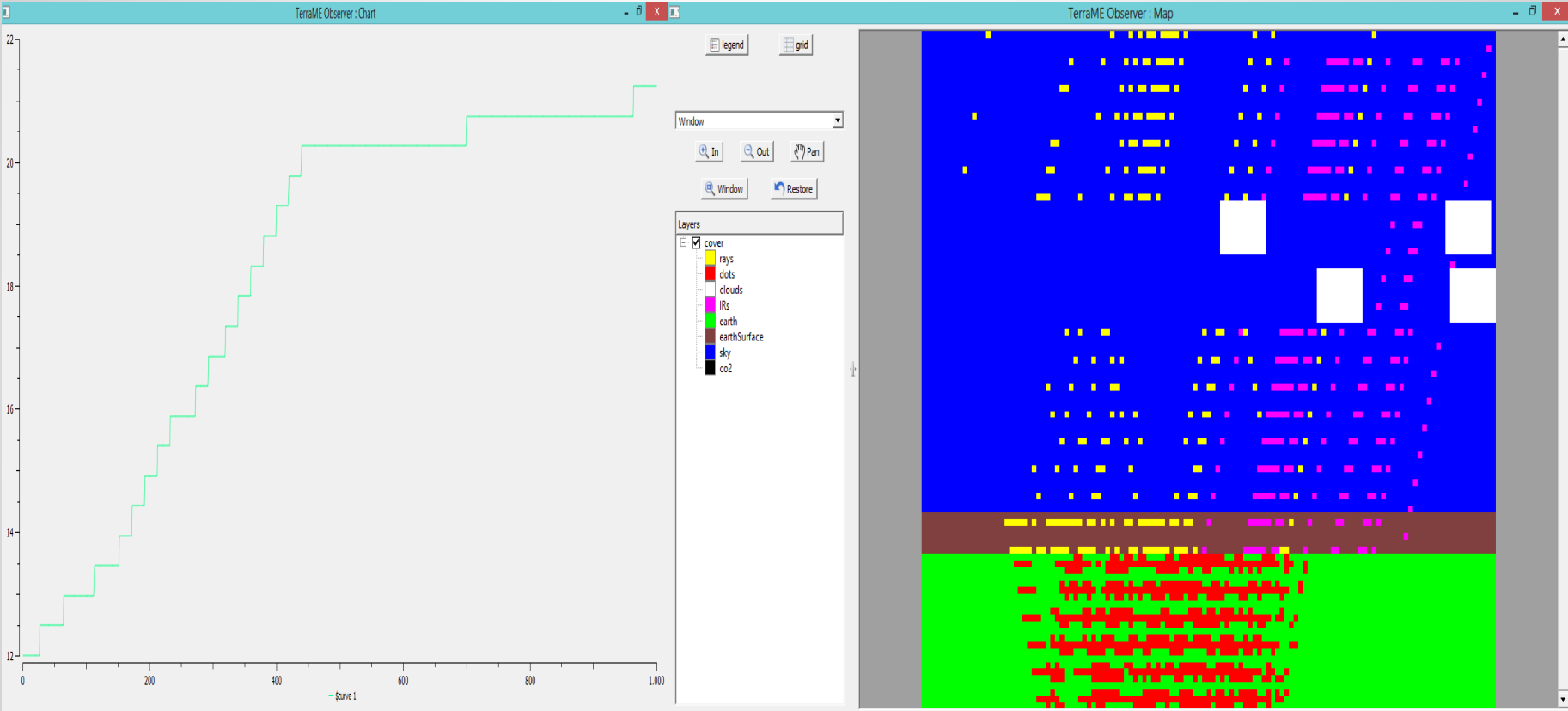
Running the model...

Inferences



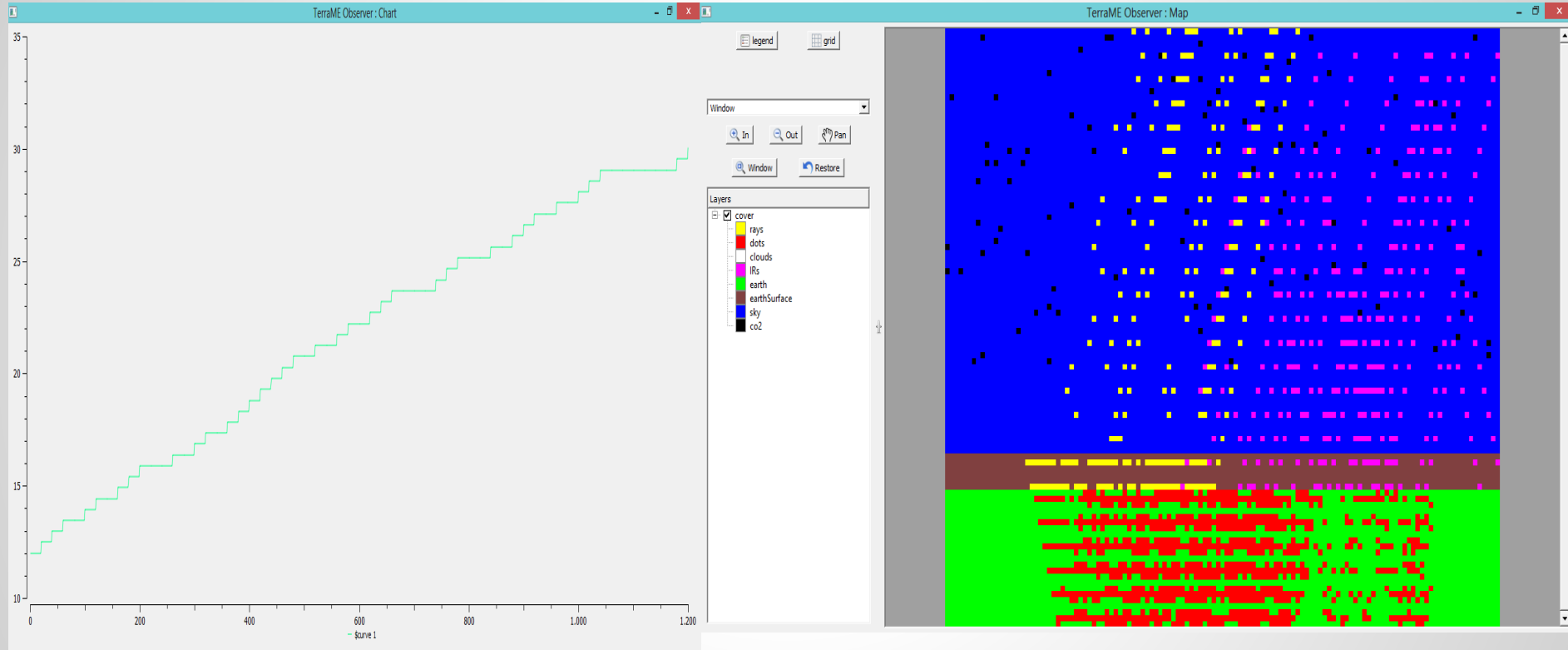
When there are no clouds and no co2 molecules(Albedo: Earth-0.6 & Clouds-0.7)

Inferences



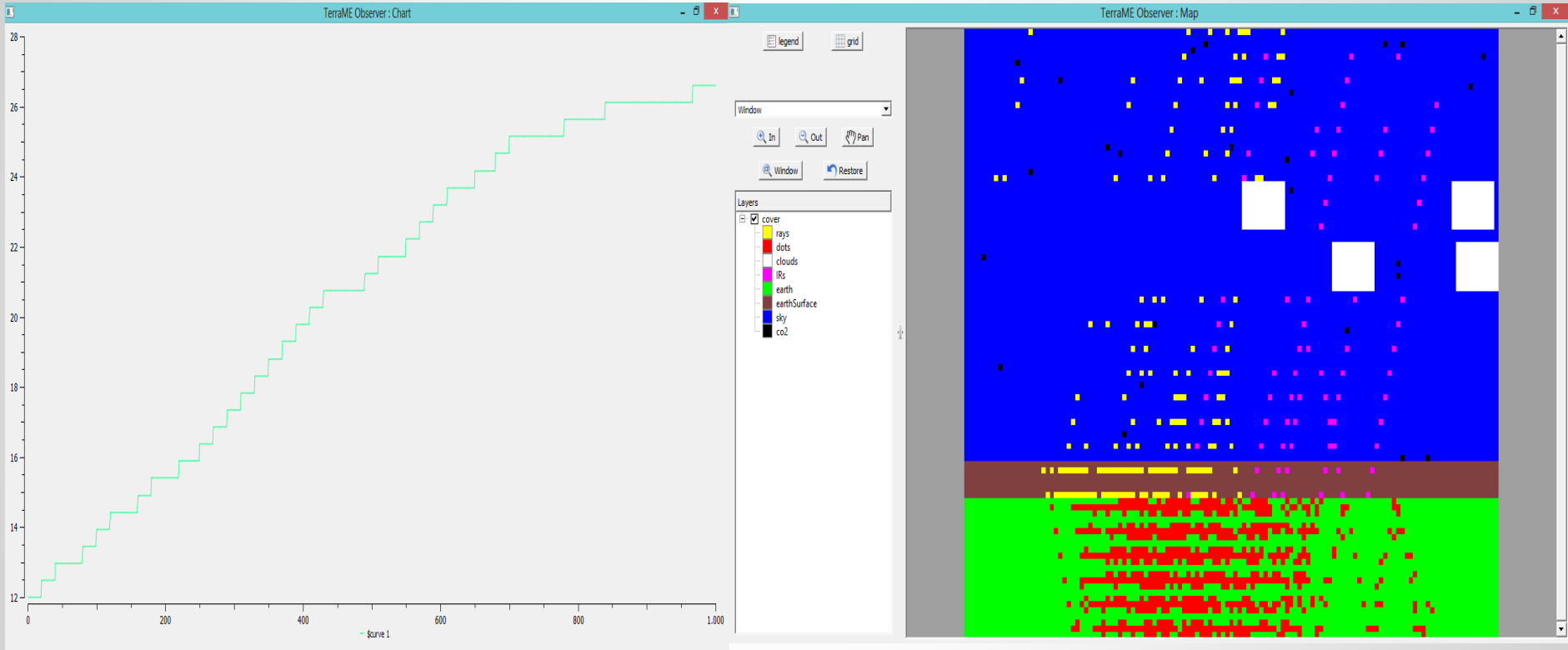
When there are two clouds and no co2 molecules(Albedo: Earth-0.6 & Clouds-0.7)

Inferences



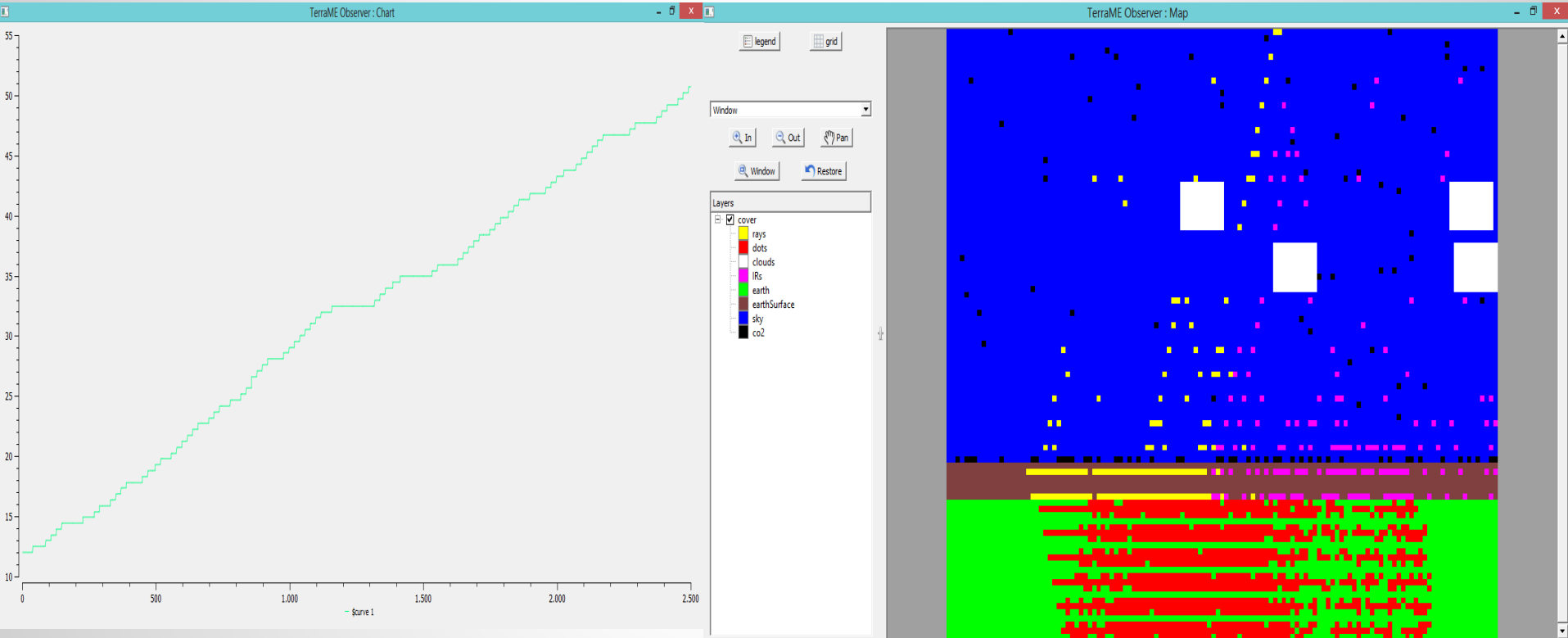
When there are no clouds and 100 co2 molecules(Albedo: Earth-0.6 & Clouds-0.7)

Inferences



When there are two clouds and 25 co2 molecules(Albedo: Earth-0.6 & Clouds-0.7)

Inferences



When there are two clouds and 100 co2 molecules(Albedo: Earth-0.6 & Clouds-0.7)

Thank You! Comments?

